

Bird Wraps

Pattern by: Lona Wilson

Wrapper Size	Species	A	B	C	D	E	Velcro
Small	AMKE, EASO, SSHA	11.5"	8"	3.5"	4.5"	3.5	1"x2"
Medium	COHA, BNOW, BWHA	15"	9"	4.6"	5.6"	4"	2"x2"
Large	BDOW, RSHA, RTHA	20.5"	13"	6.5	7.5"	6"	2"x4"
XL	GHOW, RTHA	25"	15"	8"	9"	7"	2"x5"
XXL	Vultures, Eagles	31"	20"	10"	11"	9.5	2"x6"

(Chart by WCV)

The measurements include a ½" ease, which is folded over for a ¼" hem around the entire wrap.

Fabric: Duck Cloth, Twill or Canvas 60" wide
1 yard will make TWO XXL wraps and TWO small wraps

Wash fabric in hot water, then dry in dryer. Repeat for a second time. This is to shrink the fabric as much as possible before cutting. Iron fabric and then cut to size.

Using the ½" ease, sew a ¼" hem completely around the fabric (Clip inside corners).

Sew Velcro strips as indicated for the size wrap you are making. Use only SEW ON Velcro as wraps will be washed repeatedly.

If you have the capability, use the embroidery function to put the size on the front of the wrap (S,M,L,XL,XXL) (upper right hand corner)

Abbreviations:

AMKE: American Kestrel

EASO: Eastern Screech-Owl

SSHA: Sharp Shinned Hawk

COHA: Cooper's Hawk

BNOW: Barn Owl

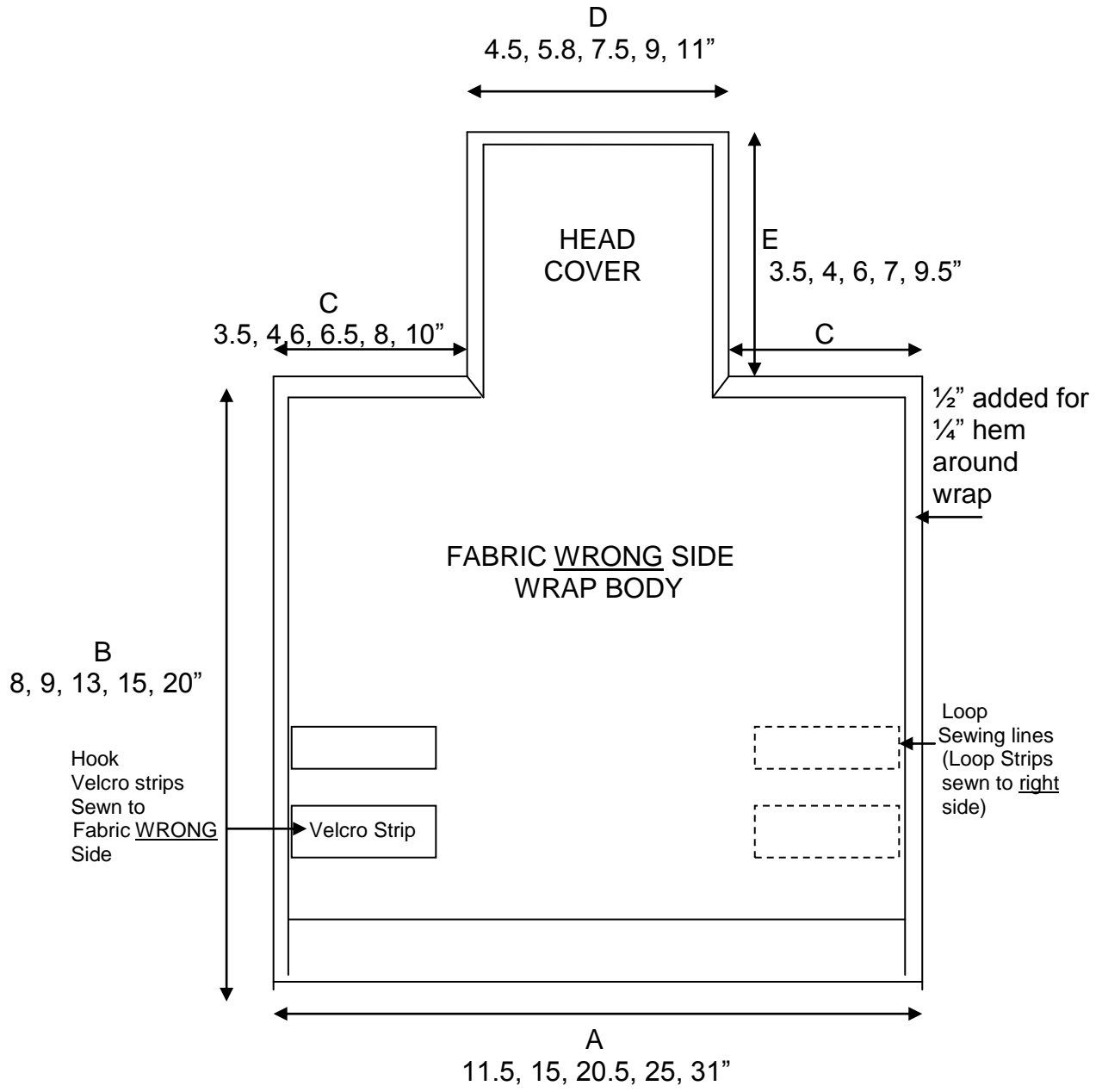
BWHA: Broad-Winged Hawk

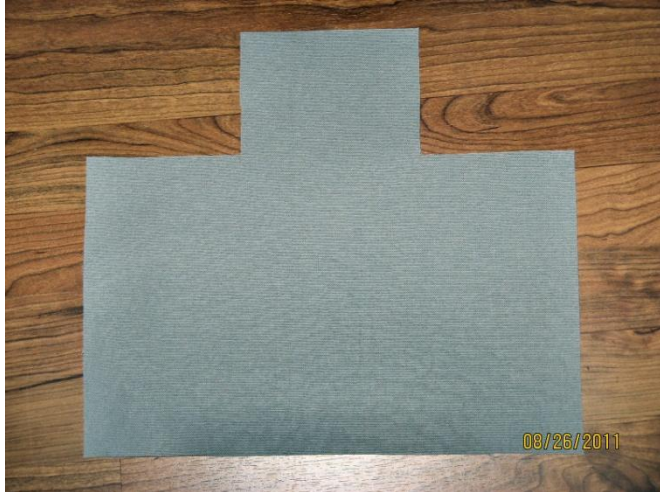
BDOW: Barred Owl

RSHA: Red-Shouldered Hawk

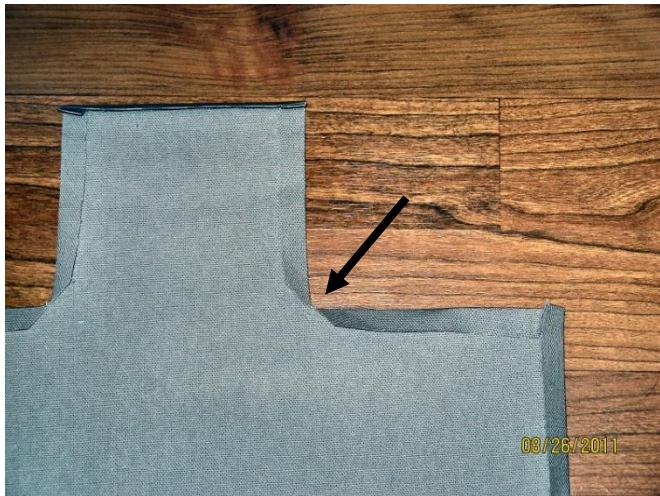
RTHA: Red-Tailed Hawk

GHOW: Great Horned Owl





Cut fabric to measurements



Cut inside corner $\frac{1}{2}$ " Fold Over $\frac{1}{2}$ " and press around entire wrap



Fold under again for $\frac{1}{4}$ " hem, and press



Sew hem down, curving around inside corners



With finished hemming



Velcro pinned on (hook on wrong side and loop on right side)



Velcro Sewn On



First Fold



Second Fold



Finished (Medium Size)